

Research Article

Mitigation of land degradation at Juana Watershed, Central Java

I.B. Pramono*

Watershed Management Technology Center, Agency of Forestry Research and Development, Ministry of Forestry.

* corresponding author: ibpramono@yahoo.com

Abstract: Land degradation became more and more widespread, especially in areas with a dense population and dependence on agriculture is high enough. Land degradation can be approximated by the susceptibility of land to erosion. This study aims to identify existing land degradation in the Juana watershed, Central Java. The method used is the analysis of the typology of the watershed. This method is based on the interaction between landforms and land cover. The results showed that the degradation of land in the watershed very heavy scattered in the upstream areas in the territory of the Kudus and Pati regency. While severe land degradation are also scattered in Kudus, Pati, and Blora regency. Almost all of these degraded areas are used for dry land farming. By knowing the rate of spread of land degradation, the authority having jurisdiction in this district offices on issues related to land degradation can plan the actions necessary to resolve or mitigate land degradation in each region so that a major disaster will not happen or the impact can be minimized.

Keywords: *land degradation, typology, Juana watershed*

Introduction

Widespread land degradation along with the growth of population incomes who depend on agriculture. An estimated 500 million people are subsistence farming in these marginal areas (Craswell et al. 1998). Higher population growth causes the land to more intensive processing that will eventually lead to problems of erosion, sedimentation and the formation of critical lands. Juana Watershed including one critical Watershed in Central Java. This watershed includes several districts in the northern part of Central Java. Treatment requires both the upstream-downstream integration, inter-sector and inter-district government. One of the problems in the watershed Juana is land degradation. In addition to causing declining land productivity, land degradation is also causing other environmental impacts such as flooding and drought.

The initial phase of a watershed management planning is the problem identification. The result of problem identification in a watershed can be used as one input for watershed planning by all stake holder in the watershed (Pramono et al. 2011). One of the problems encountered in the management of the watershed is land degradation.

Land degradation can be estimated by the identification of susceptibility of land to erosion. The vulnerability of this area can be seen from the interaction between landforms and land cover (Paimin et al., 2012). Landform mountains with closure crops would be vulnerable to erosion, contrary to the plain landform forest land cover will not be susceptible to erosion.

Mitigation of land degradation should be done to reduce severe the environmental impact. The land should be covered by permanent vegetation, because the vegetation can protect soil surface from splash and sheet erosion through three layer such as canopy, litter, and soil pores, therefore runoff can be maintained (Pereira, 1989 in Asdak, 1995). In fact most of the degraded land cannot be planted by only permanent trees because the farmers need cash crops for daily lives. This paper aims to mitigate land degradation in the watershed Juana using watershed typology analysis.

Materials and Method

Research site locate in Juana watershed that covers an area of Pati, Kudus, Blora, Grobogan,

and Jepara districts, Central Java Province. Materials used for this study were (1) The maps (hard copy and digital) scale 1: 50.000 - 1: 250,000, among others Indonesian Topographic maps, soil, geology, land use, RePPPProT, (2). Landsat 2008, (3) Materials for printing maps and GIS data processing, (4) Blank survey field checks. Equipment used for this study were (1) Stationery, (2) GPS, meter, Abney level, (3) GIS Unit, and (4) Camera. Data analysis is directed

according to the typology diagram watershed. Vulnerability of land obtained from the interaction between landforms and land cover. Each landform and land cover were scored. Form of swamp land were given a score of 1, whereas mountainous land forms were scored 5. Forest land cover were given a score of 1, while the closure of dry land were given a score of 5. Score the interaction between landforms and land cover can be seen in Table 1.

Table 1. Scale Vulnerability / Sensitivity Against Land Degradation.

Landform*	Land cover					
	Brckish water, Fresh water, Building (1)	Protected Forest, Conservation Forest (1)	Production forest, Estate Plantation, (2)	Paddy filed, grass, Shrubs (3)	Settlement (4)	Dry field, rocky soil (5)
Marshes, Beach (1)	1	1	1	1	1	1
Alluvial palins, alluvial valley (2)	1	1.5	1.5	2	2	2.5
Plains (3)	1	2	2.5	3	3.5	4
Alluvial fan, and Lahar, Terrace (4)	1	2.5	3	3.5	4	4.5
Mountains and hills (5)	1	3	3.5	4	4.5	5

Results and Discussion

Biophysical Condition

Geographically Juana watershed in the position coordinates between 110 ° 49 '10 " - 111 ° 12' 57" East Longitude and between 6 ° 36 '48" - 6 ° 59' 29" South Latitude Juana watershed administratively includes five (5) districts namely Pati regency 97672.8 ha (74.91%), Kudus 28356.17 ha (21.75%), Blora 3411.96 ha (2.62%), Grobogan 941.71 ha (0.72 %), and the district of Jepara 8:59 ha (0.007%). The administration map of Juwana watershed is presented in Figure 1.

Slope steepness

Slope steepness of Juana watershed is dominated by flat areas with a form region that has a slope of 0-8%. This includes ± 75% of the watershed area of Juana. Areas with gentle slopes (8-15%) cover ± 10.38% region, rather steep slope (15-25%) covers an area of 7.9%, a steep slope (25-40%) covers 3.9% of the territory and the rest with a steep slope (> 40%) covers 2.76% wide area. It can be said that 13.36% of the watershed area Juana is on a rather steep slope conditions up to very steep. This field slope rate affects the speed

and erosive power of overland flow. In detail the condition of the slope basin Juana is presented in Table 1 and the distribution of slope in the watershed as shown in Figure 2.

Table 1. Slope class of Juana watershed

Class	Slope (%)	Area (ha)	(%)
I	0 - 8	97975.57	74.99
II	8 - 15	13567.59	10.38
III	15 - 25	10340.66	7.92
IV	25 - 40	5157.52	3.95
V	> 40	3608.11	2.76
Total		130391.38	100.00

Soil Types

The type of soil in Juana watershed include Alluvial, Grumusol, Latosol, Litosol and the Mediterranean. The most dominating soil type is the type of Alluvial (58.25% of the territory). Alluvial soil types derived from alluvium parent material has a moderate to high fertility, it distributed in the river alluvial plain, coastal alluvial plains and basins. alluvial soil types are

generally classified in the sub-group entisols with physiographic regions formed on flood plains. materials sediment carried by the river then deposited and accumulated in this area. Then followed by the type of clay texture latosol having

up to blocky and crumb structure covers an area of 22.41%. in more detail the area of each soil type in the basin Juana presented in Table 2 and Soil Map in the watershed can be seen in Figure 3.

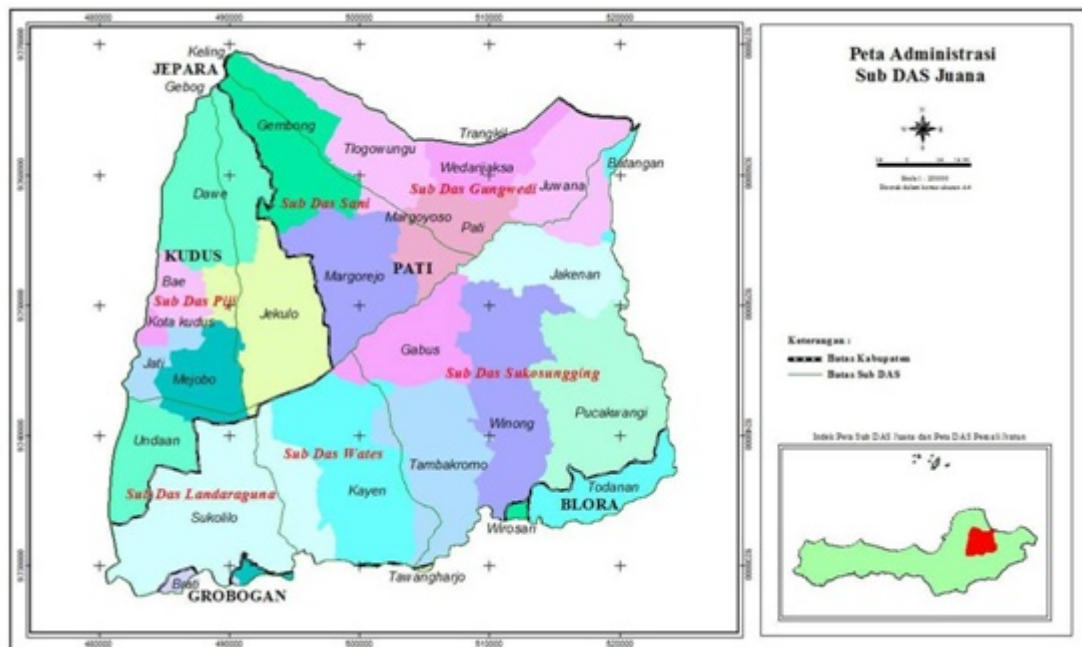


Figure 1. Administration Map of Juwana Watershed

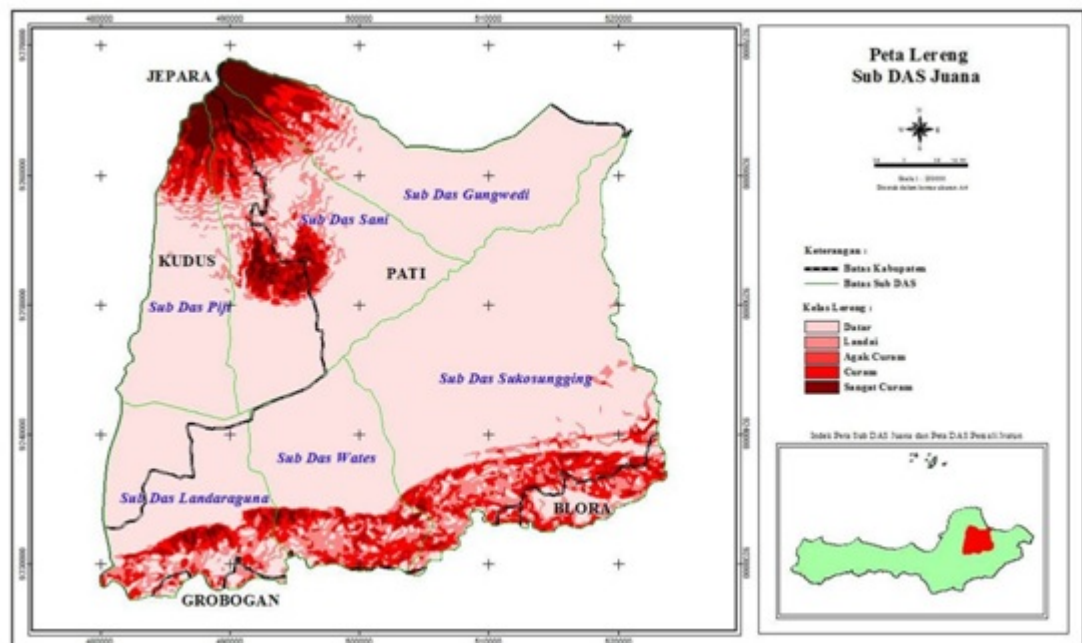


Figure 2. Slope Map of Juwana Watershed

Table 2. The area of soil type in Juana watershed

Soil Type	Area (ha)	(%)
Aluvial	76097.32	58.25
Grumusol	2522.63	1.93
Latosol	29276.89	22.41
Litosol	11595.45	8.88
Mediteran	11146.11	8.53
Total	130391.38	100.00

Source: BPDAS Pemali Jratun, 2006.

Geology

Based on the analysis of geological map, the type of rock in the basin Juana include alluvium, rock containing leusit, Miocene limestone facies,

Miocene sedimentary facies, sedimentary facies Pliocene, Pleistocene volcanic facies and reservoir / lake. The extent of each type of rock Juana basin is presented in Table 3 whereas Geological Map of the watershed as shown in Figure 4.

Rainfall

The rainfall data obtained from observed existing stations in Juana watershed. The rainfall in this region ranges from 823 mm / year up to 3,341 mm / year with an average of 2,522 mm / yr, the number of rainy days ranged between 87 days / year to 146 days / year. The highest rainfall usually occurs between October to April.

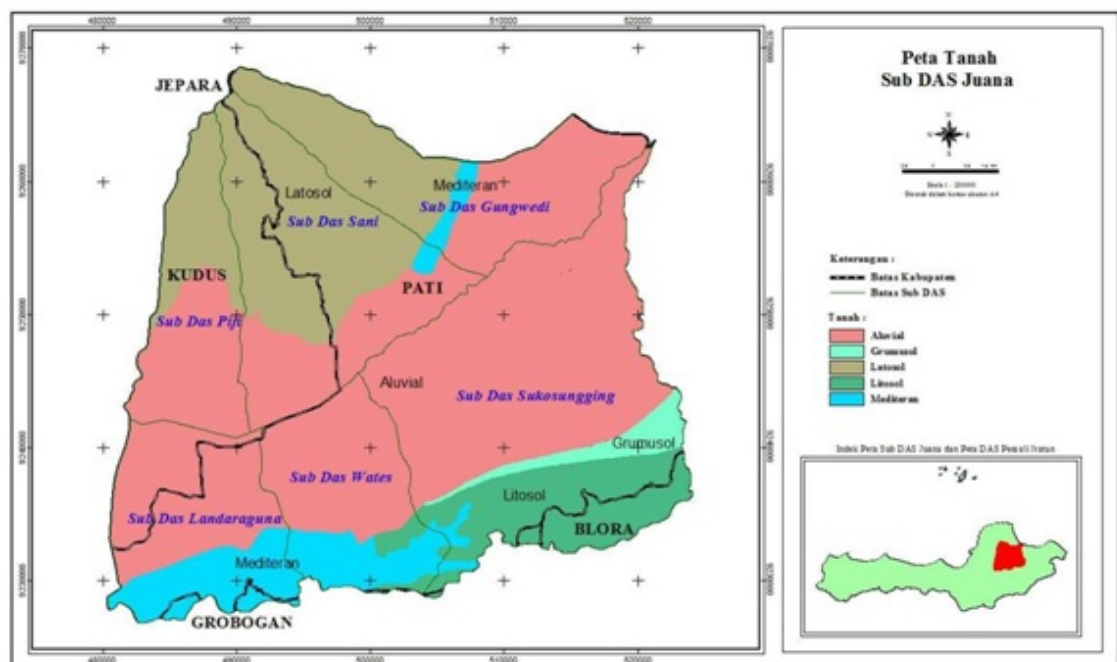


Figure 3. Soil Map of Juana Watershed

Table 3. Rock Types of Juana Watershed

Rock Types	Area (ha)	(%)
Aluvium	67194.41	51.44
Rock containing leusit	36034.18	27.58
Miocene limestone facies	11850.96	9.07
Mioses sedimentary facies	6409.32	4.91
Pliocene sedimentary facies	6324.41	4.84
Plistocen volcanic facies	2656.48	2.03
Total	130391.38	100.00

Source : BP DAS Pemali Jratun, 2006.

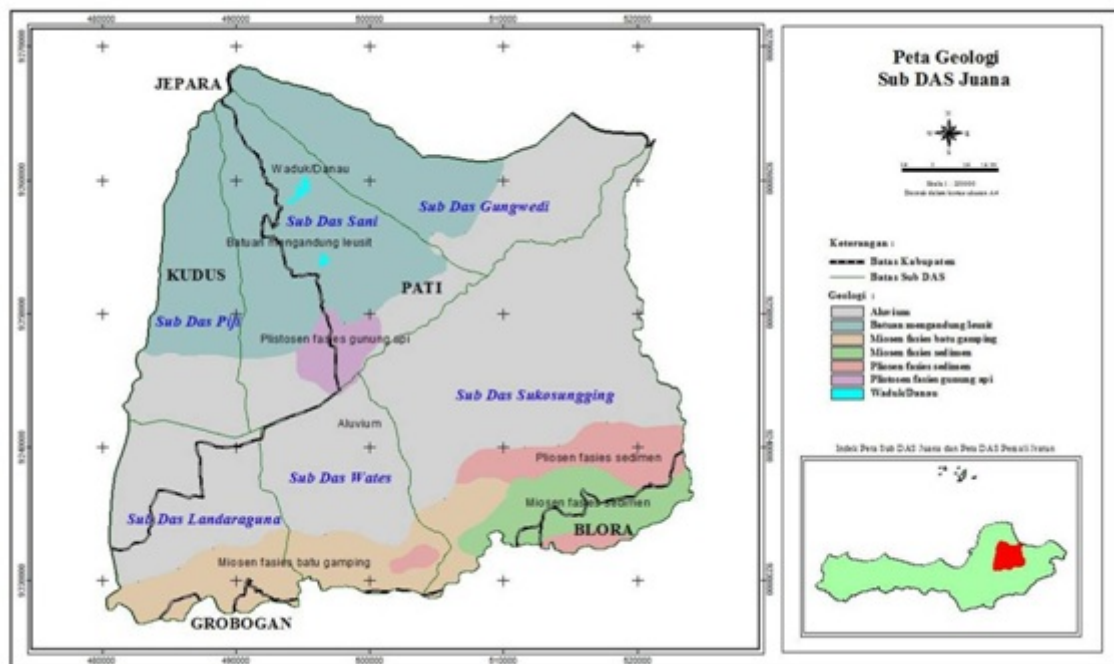


Figure 4. Geological Map of Juana Watershed

Mitigation of Degraded Land at Juana Watershed

Land system

The division of the land system describes the shape, description of the parent material, rock type, soil type, slope, annual rainfall, wet months and dry months. Under the system of land, divided into 10 watershed Attack land system are: KHY (Kahayan), MKS (Napier), BRN (Bogoran), LTG (Loud), KJP (Kajapah), HBU (Hiliboru), KLG (Necklace), BMS (Masung hill), BOM (Bombong), BRI (Bonto Sapiri), and WDK (Reservoir). Land in the watershed system deployment Attack can be seen in Figure 5.

Land Cover

Types of land cover in the watershed varies from Paddy Field, Rainfed rice fields, dry land, Estate Plantations, Forests, Settlements, Salting, grassland, scrub and others. The most extensive land cover in the watershed is use for irrigated rice field which covers 45.41% of the territory,

then the use of land to dry land covers an area of 13.94%. land use such as forests covering an area of 1.22%. in more detail the area of each land use in the watershed presented in Table 5 and the distribution of the land cover as shown in Figure 6

Table 5. Land Cover in Juana Watershed

Land cover	Area (ha)	(%)
Forest	1597.44	1.22
Estate Plantation	15239.90	11.68
Dry land	18186.62	13.94
Irrigated Rice	59252.45	45.41
Rainfed	10928.31	8.38
Grass	1022.20	0.78
Settlement	17485.58	13.40
Building	39.90	0.03
Dam	3170.13	2.43
Salting	30.55	0.02
Fresh water	318.75	0.24
Bush	3080.15	2.36
Total	130391.38	100.00

Sources: BP DAS Pemali Jatun, 2006.

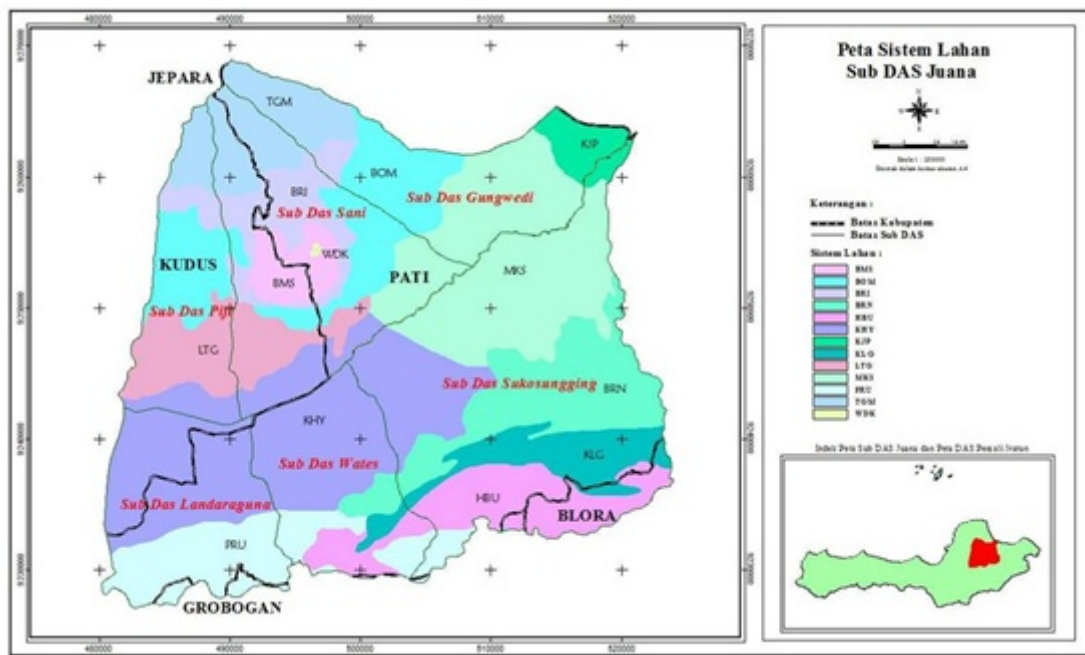


Figure 5. Land System Map of Juana Watershed

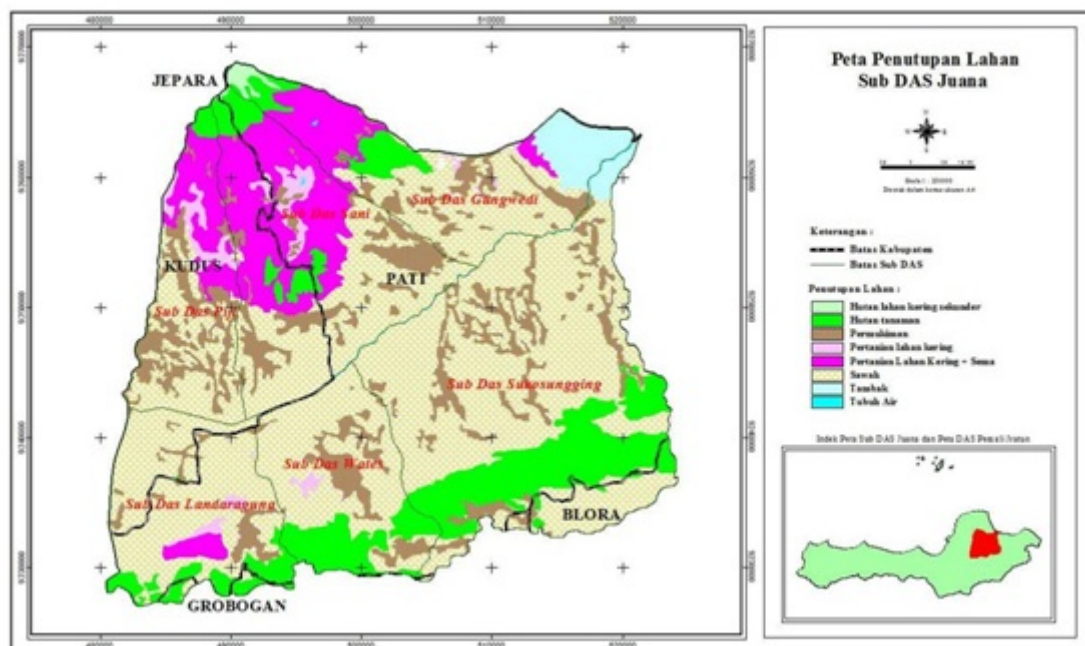


Figure 6. Land cover map of Juana watershed

Land Susceptibility

One of the factors that cause degradation of natural resources in the Juana watershed is a land utility. Optimal land productivity and sustainable land use will be achieved when adapted to the ability of carrying capacity. Most of the degraded land in Juana watershed occurred in the upper part where the slope is steep (25 – 40 %) and the land

was utilized for dry land agriculture. Consequently, soil erosion will severe and the land will be unfertile. The most degraded land took place in Kudus and Pati regency. Furthermore, degraded land also occurred in Grobogan dan Blora regency but it less severe than in Pati and Kudus regency as shown in Figure 7.

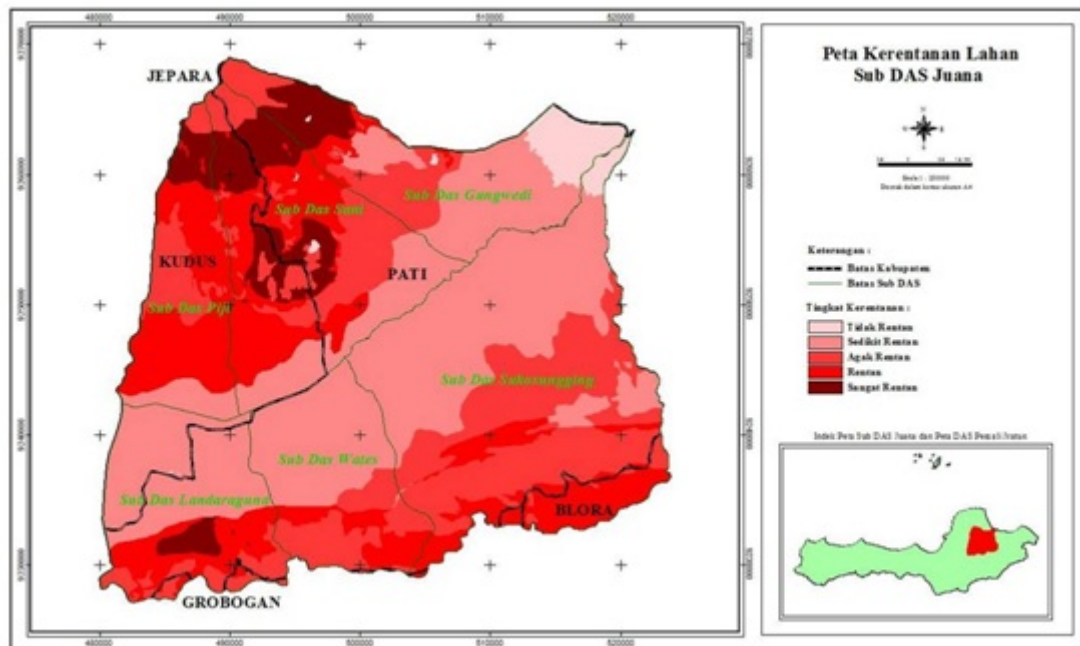


Figure 7. Land Susceptibility Map of Juana Watershed

Based on Figure 7, the local government of Kudus and Pati district should pay attention on their heavy degraded land. They have to collaborate to solve the problem because the heavy degraded areas are located in their administrative border. One of alternative solution is introducing agroforestry system where the land is cultivated mixing between tree and cash crops. Alwi et al. (2011) mentioned that plantation of cocoa, orange, pepper, bananas, and maize can reduce soil erosion and surface runoff in South East Sulawesi. The farmer and local government should determine the most suitable tree and cash crops in their land. Some soil conservation measure should be applied in certain areas where slope steepness is high. Although district of Blora and Grobogan have small contribution area in Juana watershed, they should rehabilitate their degraded land because the impact will influence in lower part of the watershed.

Conclusions and Recommendations

1. Land degradation in the watershed Juana is heavily spread into the upstream area of the Kudus and Pati Districts. Almost all of these degraded areas are used for dry land farming.
2. The impact of degraded land is not only on the land itself, but is also on the lower part of the watershed. Therefore, watershed analysis

unit is the most appropriate technique for the mitigation of land degradation.

3. Handling of degraded lands can be started from a very vulnerable land in each district.
4. By knowing the rate of spread of land degradation is the authority having jurisdiction in this district offices on issues related to land degradation can quickly plan the actions necessary to resolve or mitigate land degradation in each region so that no greater disaster will occur.

References

- Asdak, C. 1995. Hydrology and Watershed Management. Gadjah Mada University Press, Yogyakarta (*in Indonesian*).
- Alwi, L.O., Sinukaban, N., Solahudin, S. and Pawitan, H. 2011. A study of the impacts of landuse dynamics on erosion and hydrological conditions of Wangu watershed. *Jurnal Hidrolitan* 2(2): 74-86. (*in Indonesian*).
- BP DAS Pemali Jratun. 2006. Characteristics of Juwana watershed. (*in Indonesian*).
- Craswell, E., Bechstedt, H.D. and R. Lefroy, R. 1998. Asia's ecological crisis. International Board for Soil Research and Management (IBSRM). Bangkok. www.soilusda.gov/use/worldsoils/Landdeg/199808news.html.
- Paimin, I.B., Pramono, Purwanto and Indrawati, D.R. 2012. Planning Systems of Watershed Management Forestry Research and Development Agency, Ministry of Forestry, Indonesia. (*in Indonesian*).

Pramono, I.B., Paimin, Purwanto and Putera, P.B. 2011.
A Study on Application of Watershed Typology in
Planning System of Watershed Management.
Board of Research in Forest Technology and
Watershed Management. (*in Indonesian*).